



National
Center
for
Rural
Road
Safety

Est. Dec. 2014



Livability

Facilitated by: Linda DuPriest, LDP Strategies and David Kack, Western Transportation Institute

A National Partnership

partnership for
Sustainable Communities
an interagency partnership HUD • DOT • EPA



Home About Us Map Case Studies Grants Resources Get Involved

Google Search



DOT Launches New Livable Communities Discussion Board

In July, DOT released the [Livable Communities Discussion Board](#), a "community of practice," or online public forum to share information and ask questions about different topics related to livable communities. The site is an online community of practitioners in public, private, and non-profit agencies and organizations at the local, State, and Federal levels, who are interested in helping communities provide more transportation choices, encourage access to good jobs and affordable housing, support quality schools, and promote safer streets and roads.
[Join today!](#)

By working together, [HUD, DOT, and EPA] can make sure that when it comes to development—housing, transportation, energy efficiency—these things aren't mutually exclusive; they go hand in hand. And that means making sure that affordable housing exists in close proximity to jobs and transportation. That means encouraging shorter travel times and lower travel costs. It means safer, greener, more livable communities.



—President Barack Obama

Sustainable Communities

Sustainable communities are places that have a variety of housing and transportation choices, with destinations close to home. As a result, they tend to have lower transportation costs, reduce air pollution and stormwater runoff, decrease infrastructure costs, preserve historic properties and sensitive lands, save people time in traffic, be more economically resilient and meet market demand for different types of housing at different price points. Rural, suburban, and urban communities can all use sustainable communities strategies and techniques to invest in healthy, safe and walkable neighborhoods, but these strategies will look different in each place depending on the community's character, context, and needs.

Developing more sustainable communities is important to our national goals of strengthening our economy, creating good jobs now while providing a foundation for lasting prosperity, using energy more efficiently to secure energy independence, and protecting our natural environment and human health. Three federal agencies came together to create the Partnership for Sustainable Communities to help places around the country develop in more environmentally and economically sustainable ways. To guide its work, the Partnership developed [six livability principles](#):

- Provide more transportation choices.
- Promote equitable, affordable housing.
- Enhance economic competitiveness.



With help from the Partnership for Sustainable Communities, Bridgeport, CT, moves forward

—December 17, 2012

Links to Partnership Agencies

 **Department of Housing and Urban Development**
Office of Sustainable Housing and Communities



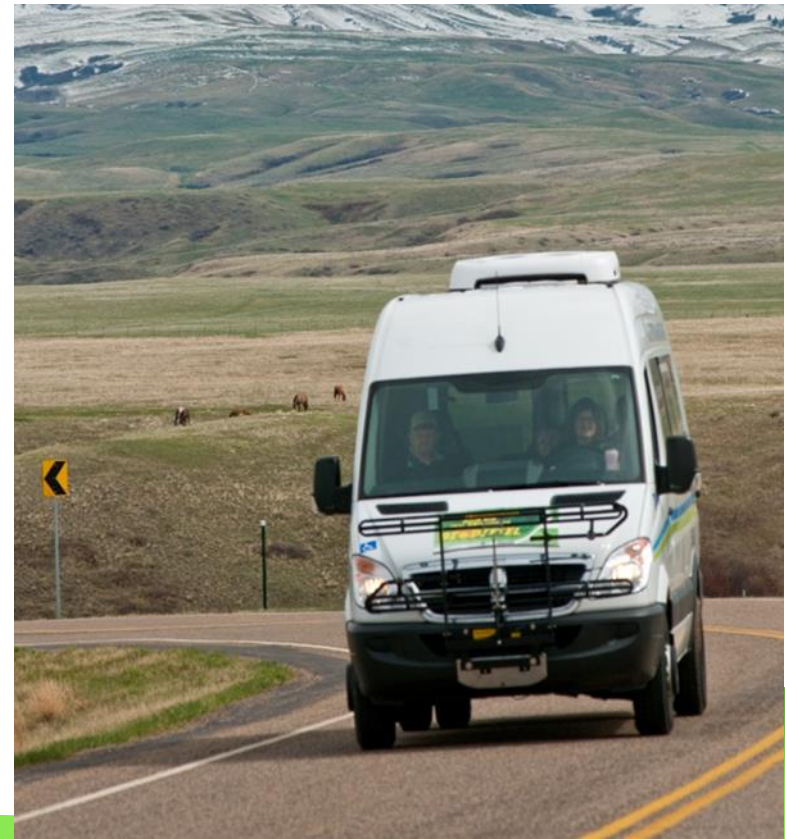
Six Livability Principles

- Provide more transportation choices
- Expand location- and energy-efficient housing choices
- Improve the economic competitiveness of neighborhoods
- Target Federal funding toward existing communities
- Align Federal policies and funding
- Enhance the unique characteristics of all communities



Provide More Transportation Choices

- To decrease household transportation costs
- Reduce our dependence on oil
- Improve air quality
- Promote public health





Expand Location- and Energy-Efficient Housing Choices

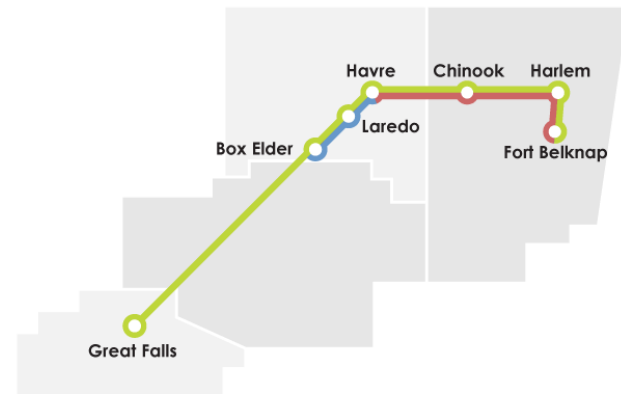
- For people of all ages, incomes, races and ethnicities to increase mobility and lower the combined costs of housing and transportation



North Central Montana Transit

[Home](#) [News](#) [Routes & Schedules](#) [Information](#)

[Blue Line](#) | [Red Line](#) | [Green Line](#)
[Fort Belknap Transit Service](#) | [Rocky Boy Transit Service](#)



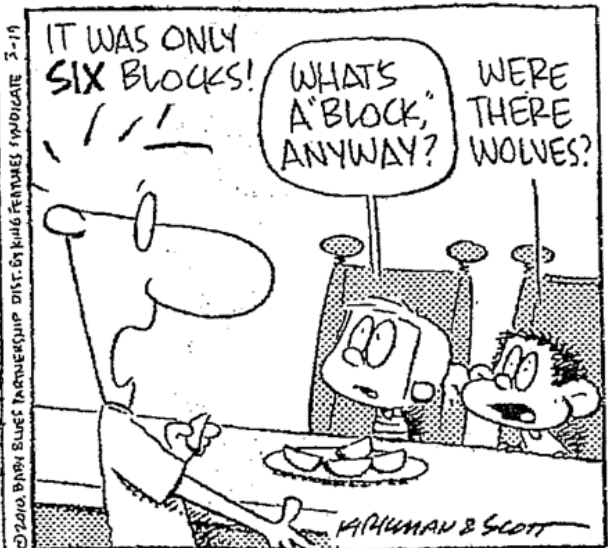
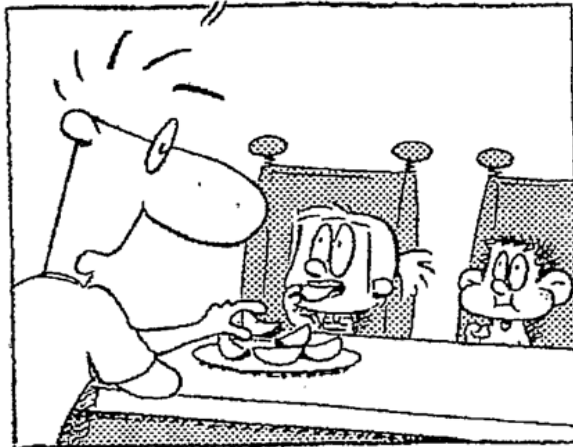


Improve the Economic Competitiveness of Neighborhoods

- By giving people reliable access to employment centers, educational opportunities, services and other basic needs

BABY BLUES

WHEN I WAS A BOY, I WALKED SIX BLOCKS TO SCHOOL EVERY DAY.



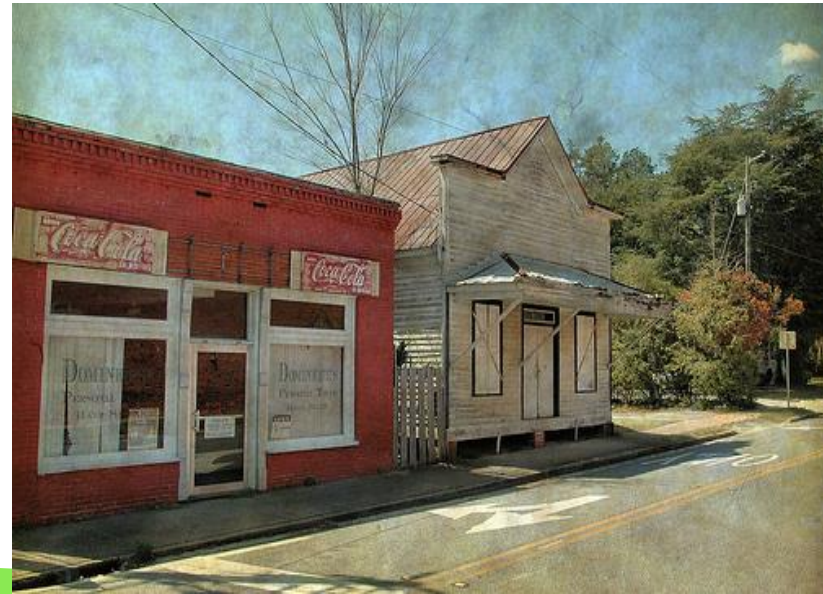
©2010 BABY BLUES PARTNERSHIP DIST. BY KUNG FENNELS (INDICATE 3-19)

KARL HUMAN & SCOTT



Target Federal Funding Toward Existing Communities

- Through transit-oriented development and land recycling
- To revitalize communities
- Reduce public work costs
- Safeguard rural landscapes





Align Federal Policies and Funding

- To remove barriers to collaboration
- Leverage funding
- Increase the effectiveness of programs to plan for future growth





Enhance the Unique Characteristics of all Communities

- Invest in healthy, safe and walkable neighborhoods, whether rural, urban or suburban





Discussion

- Identify opportunities to increase quality of life, economic development and safety using the six principles
- Quantify opportunities for collaboration to increase livability
- Draft solutions and next steps toward implementation