



## The Facts About Rural Road Safety

Safety on rural roads is an important national concern because a majority of highway fatalities happen on rural roads. In 2014, 19 percent of the US population lived in rural areas but rural road fatalities accounted for 51 percent of all fatalities (NHTSA, 2016). Even with reductions in the number of fatalities on the roadways, fatality rate in rural areas is 2.4 times higher than the fatality rate in urban areas. (FHWA, 2016). The data in this factsheet was derived from national databases and may differ from state maintained databases. For more information, refer to the state's crash database. For more information, refer to <https://safety.aladata.com/>.

### Miles by Ownership

	State Highway System	County	Town, Township Municipal	Other Jurisdiction	Federal Agency	Total
Rural	8,362	60,150	6,288	169	819	75,788
Urban	2,558	2,059	20,931	0	683	26,231

Source: Highway Statistics, FHWA 2015

<http://www.fhwa.dot.gov/policyinformation/statistics/2015/hm10.cfm>

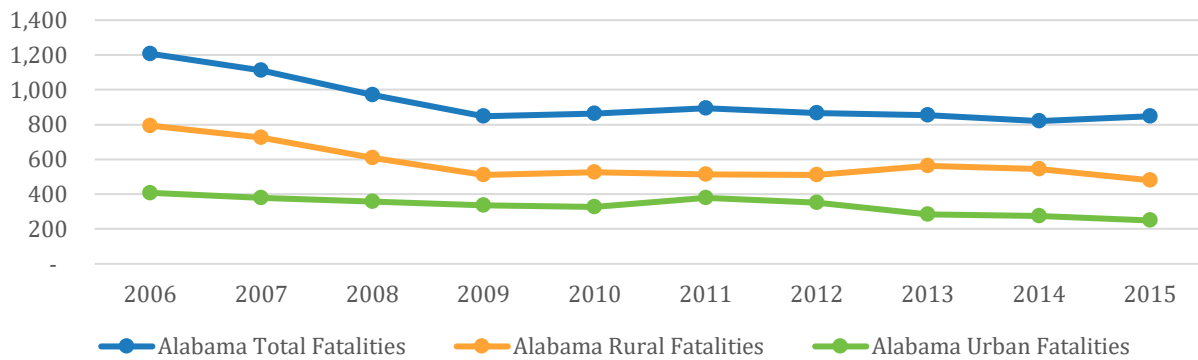
### Miles by Functional System (Urban/Rural)

	Total Rural	Interstate/Freeway	Principal Arterial	Minor Arterial	Major Collector	Minor Collector	Local
Rural	75,788	571	2,035	4,015	12,201	6,636	50,330
Urban	26,231	457	1,298	2,345	3,622	186	18,324

Source: Highway Statistics, FHWA 2015

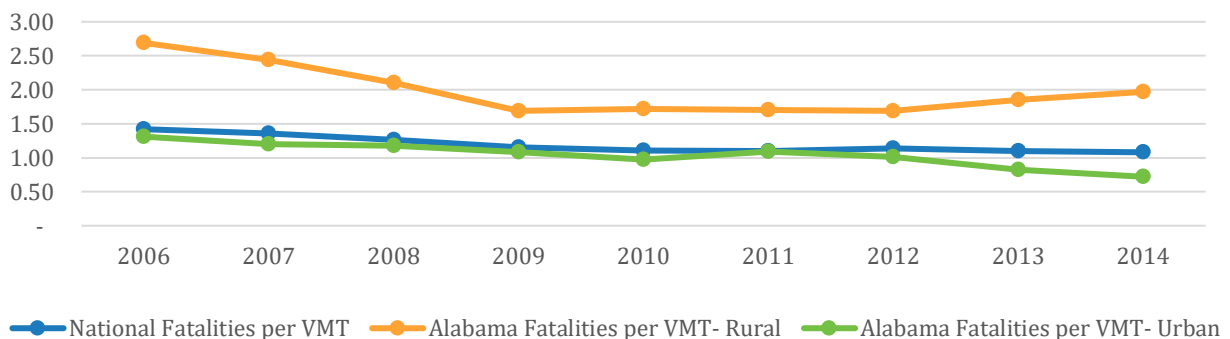
<http://www.fhwa.dot.gov/policyinformation/statistics/2015/hm20.cfm>

### Alabama Motor Vehicle Fatalities by Year (10 years) and Location (Urban and Rural, and National)



Source: NHTSA FARS

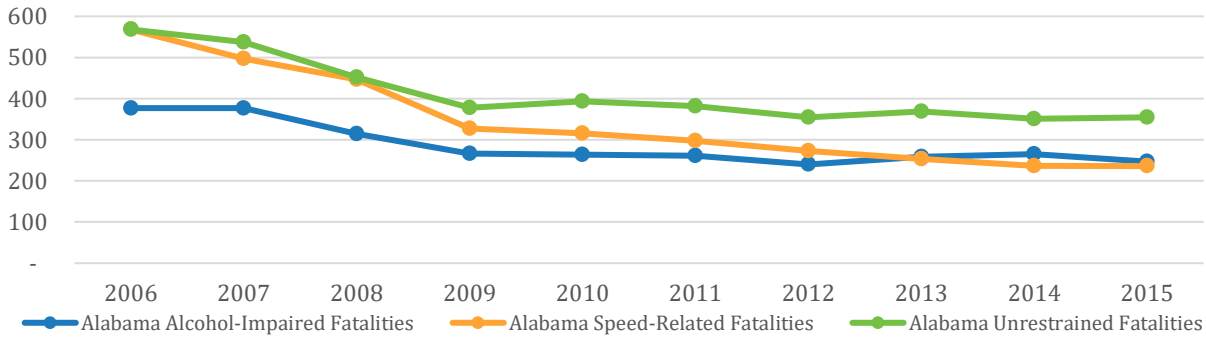
### Alabama Motor Vehicle Fatalities by VMT, by Year and Location



Source: NHTSA FARS

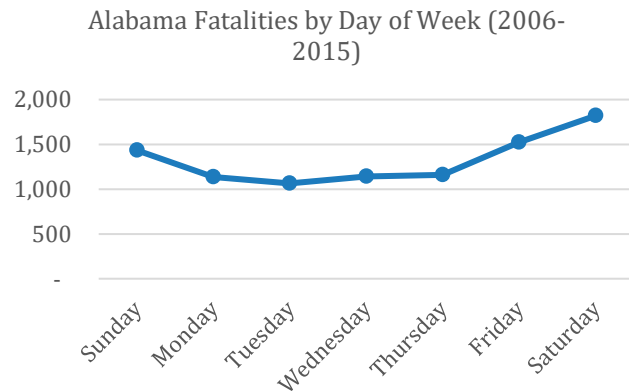
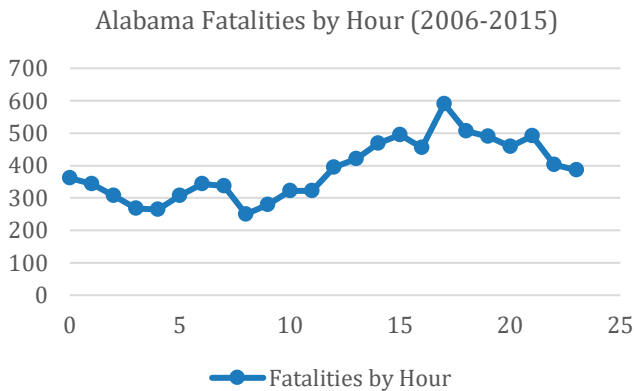


### Alabama Motor Vehicle Fatalities by Contributing Factor (Speed, Alcohol, Restraint Use, Time of Day, Day of Week)\*



Source: NHTSA FARS, \*Numbers may not add up since there can be multiple contributing factors in a crash.

### Alabama Motor Vehicle Fatalities by Hour and Day of Week



Source: NHTSA FARS

### Resources

Alabama Strategic Highway Safety Plan

[http://www.dot.state.al.us/dsweb/div\\_ted/Traffic\\_SOS/pdf/Alabama\\_SHSP\\_081117.pdf](http://www.dot.state.al.us/dsweb/div_ted/Traffic_SOS/pdf/Alabama_SHSP_081117.pdf)

Alabama Motor Vehicle Traffic Crash Facts Book <http://drivesafealabama.org/uploads/files/ALDOT-2015CrashFactsBook.pdf>

National Center for Rural Road Safety <http://ruralsafetycenter.org/>

FHWA Local and Rural Safety [http://safety.fhwa.dot.gov/local\\_rural/](http://safety.fhwa.dot.gov/local_rural/)

Local Technical Assistance Program (LTAP) <http://www.ltap.org/>

National Association of Development Organizations (NADO)

National Association of County Engineers (NACE) <http://www.countyengineers.org>

American Public Works Association (APWA) <http://apwa.net/>

### Acknowledgement and Disclaimer

This material is based upon work supported by the U.S. Department of Transportation under Cooperative Agreement No. DTFH6114H00021. Any opinions, findings, and conclusions or recommendations expressed in this publication are those of the Author(s) and do not necessarily reflect the view of the U.S. Department of Transportation.