



The Facts About Rural Road Safety

Safety on rural roads is an important national concern because a majority of highway fatalities happen on rural roads. In 2014, 19 percent of the US population lived in rural areas but rural road fatalities accounted for 51 percent of all fatalities (NHTSA, 2016). Even with reductions in the number of fatalities on the roadways, fatality rate in rural areas is 2.4 times higher than the fatality rate in urban areas. (FHWA, 2016). The data in this factsheet was derived from national databases and may differ from state maintained databases. For more information, refer to the state’s crash database and <http://www.txdot.gov/inside-txdot/division/traffic.html>.

Miles by Ownership

	State Highway System	County	Town, Township Municipal	Other Jurisdiction	Federal Agency	Total
Rural	64,729	127,691	10,759	6	2,037	205,222
Urban	15,694	19,270	72,444	365	600	108,373

Source: Highway Statistics, FHWA 2015

<http://www.fhwa.dot.gov/policyinformation/statistics/2015/hm10.cfm>

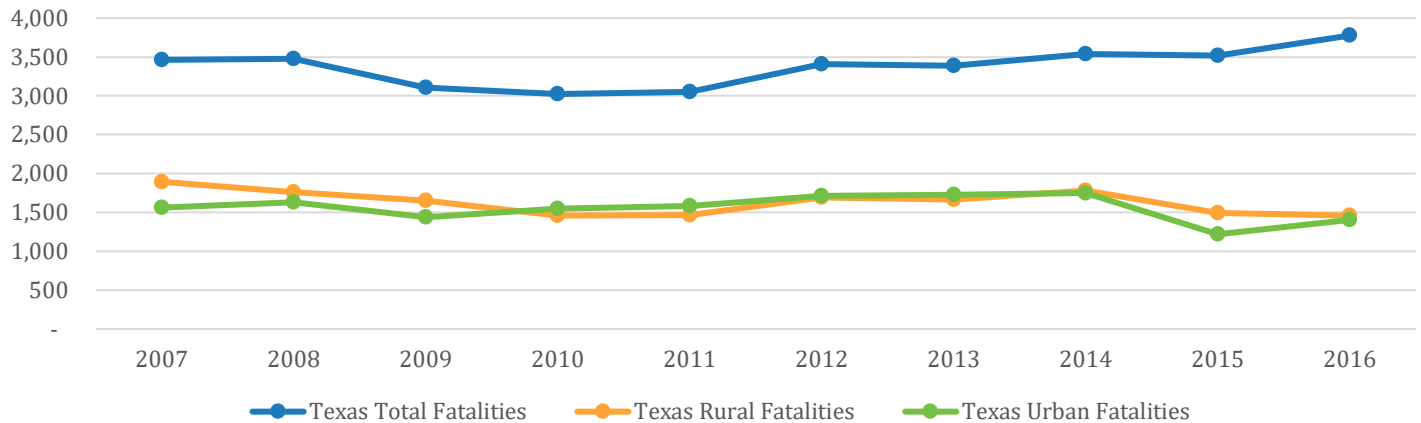
Miles by Functional System (Urban/Rural)

	Total	Interstate/ Freeway	Principal Arterial	Minor Arterial	Major Collector	Minor Collector	Local
Rural	205,222	2,005	8,438	10,465	35,080	14,947	134,288
Urban	108,373	2,927	6,083	7,957	15,820	1,067	74,520

Source: Highway Statistics, FHWA 2015

<http://www.fhwa.dot.gov/policyinformation/statistics/2015/hm20.cfm>

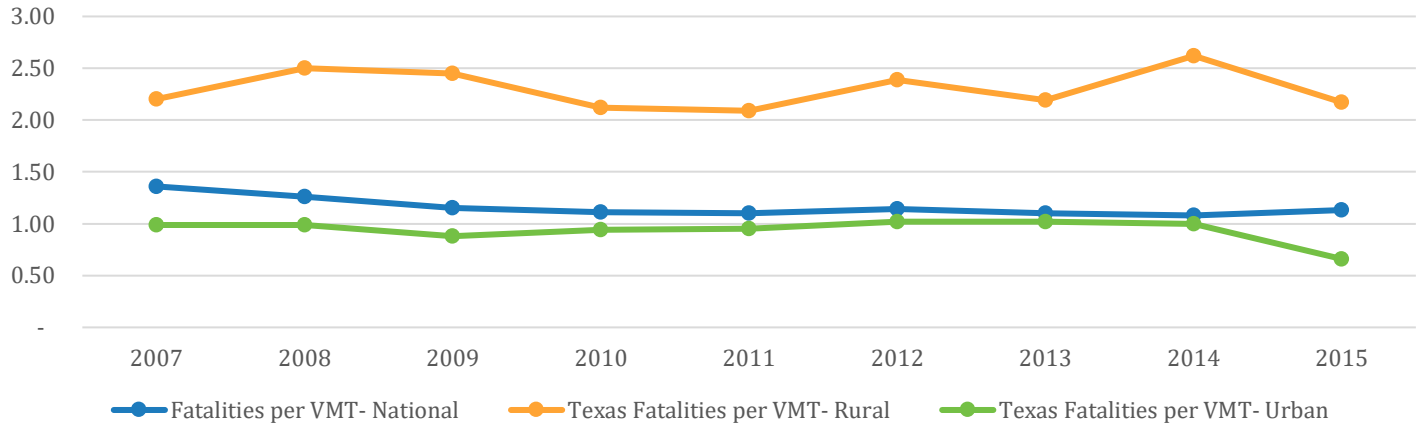
Texas Motor Vehicle Fatalities by Year (10 years) and Location (Urban and Rural, and National)



Source: NHTSA FARS

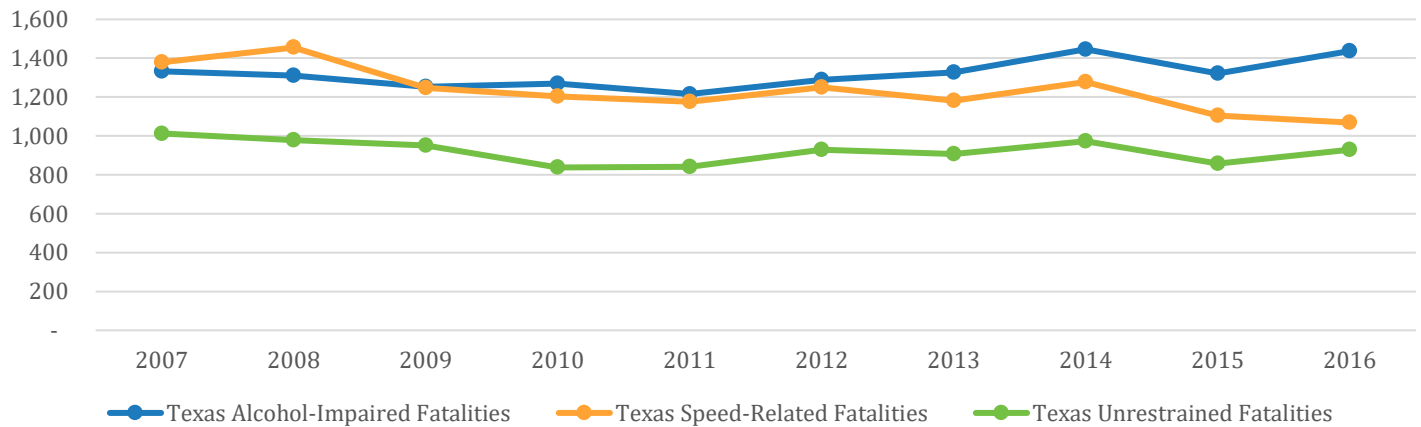


Texas Motor Vehicle Fatalities by VMT, by Year and Location*



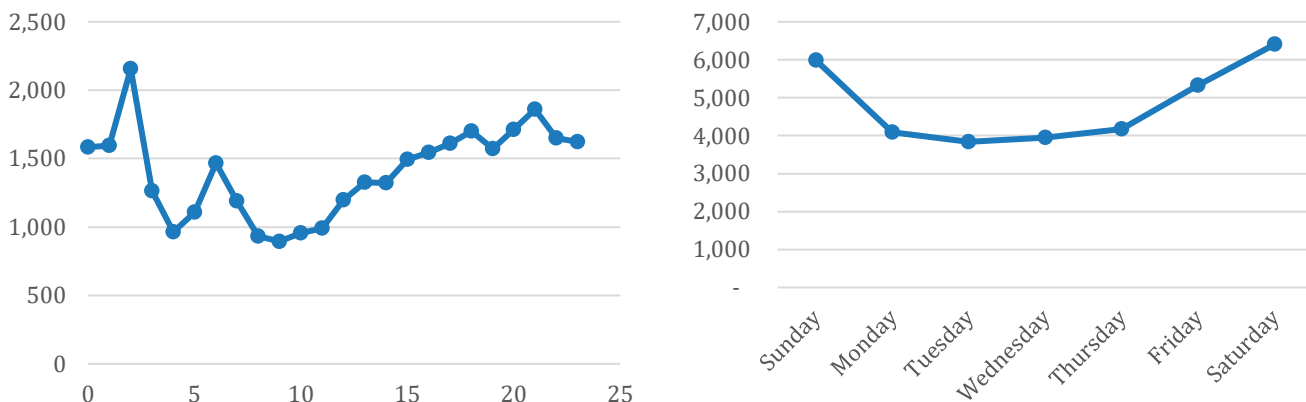
Source: NHTSA FARS *Fatality per VMT data is unavailable for 2016 as of January 2018.

Texas Motor Vehicle Fatalities by Contributing Factor (Speed, Alcohol, Restraint Use, Time of Day, Day of Week)*



Source: NHTSA FARS, *Numbers may not add up since there can be multiple contributing factors in a crash.

Texas Motor Vehicle Fatalities by Hour and Day of Week



Source: NHTSA FARS



Resources

Texas Strategic Highway Safety Plan <http://ftp.dot.state.tx.us/pub/txdot-info/library/pubs/gov/shsp.pdf>

Texas Motor Vehicle Crash Statistics <http://www.txdot.gov/inside-txdot/forms-publications/drivers-vehicles/publications/annual-summary.html>

National Center for Rural Road Safety <http://ruralsafetycenter.org/>

FHWA Local and Rural Safety http://safety.fhwa.dot.gov/local_rural/

Local Technical Assistance Program (LTAP) <http://www.ltap.org/>

National Association of Development Organizations (NADO)

National Association of County Engineers (NACE) <http://www.countyengineers.org>

American Public Works Association (APWA) <http://apwa.net/>

Acknowledgement and Disclaimer

This material is based upon work supported by the U.S. Department of Transportation under Cooperative Agreement No. DTFH6114H00021. Any opinions, findings, and conclusions or recommendations expressed in this publication are those of the Author(s) and do not necessarily reflect the view of the U.S. Department of Transportation.